
339.98

: , 2017, 2 (94), . 104–125

• • , • •

:

2014–2016 .

2016 .

«

»¹.

1

01.12.2016. – URL: http://www.consultant.ru/document/cons_doc_LAW_207978/ .

2020 : 2020 .
2016 .
5–5,3%, – 9–12%,
– 5,1–5,5%³.
4,
:
(. 1).
2000 2015 . 1,5 . .,
0,4 . ., – 4,3 . .,
2
» « » ()⁵.
« » 2004–2015 . 4,3 . .,
4,6 . .,

³ : 2020 (26 2014). – URL:
<http://docs.cntd.ru/document/902229380> .

⁴ : . . . – 2008. – 2. – . 225–243. . ,
[6; 12; 16].

⁵ « » : ,

:

1

, %*

	2005	2014	2015
	11,9	10,3	10,4
	11,3	10,9**	...
	13,5	13,3	13,1
	13,2	8,9	8,9

* (: . 2016. , 2016. – URL: http://www.gks.ru/wps/wcm/connect/rosstat_main/rosstat/ru/statistics/publications/catalog/doc_1138623506156 ;
 2007–2014 . , 2015. – URL: http://www.gks.ru/bgd/regl/b15_15/Main.htm ;
 2017. – URL: http://www.gks.ru/wps/wcm/connect/rosstat_main/rosstat/ru/statistics/accounts/#).
 ** 2013 .

2

« » « »

, %*

	2004		2014		2015	
« »	38,0	45,7	32,0	38,4	33,7	41,1
	31,7	37,0	27,0	32,5	28,2	34,8
« »	56,6	49,1	64,3	57,5	62,7	54,6
	10,9	13,0	14,8	17,3	13,9	16,0

* (: . 2007–2014 -
 , 2015. – URL: http://www.gks.ru/bgd/regl/b15_15/Main.htm ;
 , 2017. – URL:
http://www.gks.ru/wps/wcm/connect/rosstat_main/rosstat/ru/statistics/accounts/#).

« » -
 ;

3,5 2,2 -
 « »
 6,1 . . . , 5,5 . . . -
 « » « » , -
 , -
 , -
 , -
 : -
 « » -
 « » -
 « » , -
 , -
 , -
 [11],
 . -
 2005 , 2015 . -
 5,9 . . . -
 6 , -
 . -

6
 , : 2030 . - : (. : , 2013).

:

(.3). 0,1 . . -
 2,7 . . -
 3

, %*

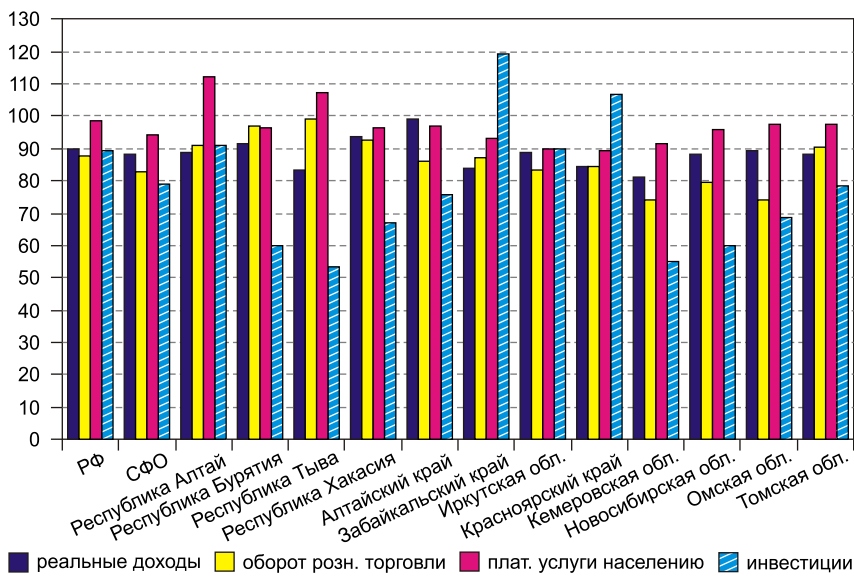
	2005		2014		2015	
	64,7	67,0	67,3	62,4	67,4	61,1
:	23,2	16,9	21,1	18,7	23,1	19,6
	44,6	62,2	45,3	57,3	44,3	56,7
	27,5	16,8	28,4	19,7	27,1	19,5
**	-	-	19,3	19,0

* (: . -
 . 2016. , 2016. – URL: http://www.gks.ru/wps/wcm/connect/rosstat_main/rosstat/ru/statistics/publications/catalog/doc_1138623506156 ;
 2007–2014 , 2015. – URL: http://www.gks.ru/bgd/regl/b15_15/Main.htm ;
 , 2017. –
 URL: http://www.gks.ru/wps/wcm/connect/rosstat_main/rosstat/ru/statistics/accounts/#.
 ** :
 , 2016. – URL: http://www.gks.ru/wps/wcm/connect/rosstat_main/rosstat/ru/statistics/efficiency/# .

«
 » [7, .3].
 ?
 .1. –
 2013–2016 .
 2016 .7,
 2014–2015 .
 2016 .
 – 2016 ., 6,7%,
 5,6%, 2016 . 94,6%
 2015 ., –94,8%,
 2016 . 2015 . 98,1%,
 –99,7%⁸.

⁷ ::
 2016 . – URL: http://www.gks.ru/wps/wcm/connect/rosstat_main/rosstat/ru/statistics/publications/catalog/doc_1246601078438 .

⁸ ::
 2017 . – URL: http://www.gks.ru/wps/wcm/connect/rosstat_main/rosstat/ru/statistics/publications/catalog/doc_1246601078438 .



. I. , , 2016 . 2013 ., %
 , 2015 . 2014 .
 17% 8,4%.
 2016 .,
 0,9%,
 ,
 2013 .
 ,
 .

« » – , -

2000–2013 . - - - - -

2017 2018 2019

2015 .: 2017 . 10%, 2019 . 9,6%

2017–2019 . 0,7%

2017 . 4,1%, 2019 .-

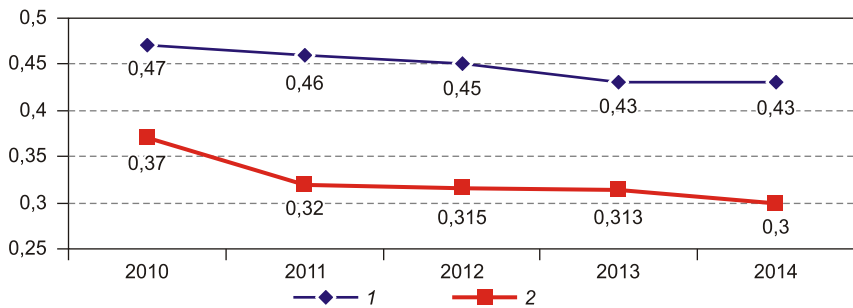
2015 . 9.

101,1% 2016 . 2015 ., - 100,4%; - 104,8%, - 104%¹⁰.

⁹ .: 2017 2018 2019 . 2016. – URL: http://economy.gov.ru/wps/wcm/connect/9dd9931d-3960-454c-a8db-ec6fc1ab4bfc/prognoz_2017_2019.pdf?MOD=AJPERES&CACHEID=9dd9931d-3960-454c-a8db-ec6fc1ab4bfc .

¹⁰ .: 2017 .

2010–2014 .
[17].



2010–2014 .
1000

; 2 –

C

, 2015 .
, 2005 .
400 145 .¹¹
2030 ¹²
?
2016 . (.4).
30,4

¹¹ URL: <http://nsk.rbc.ru/nsk/freenews/5892a20a9a79477d9ea18ca5?from=main> .

¹² .: 2
2016 . 1083- . – URL: <http://rodosnpp.ru/media/rodos/documents/2016/news/rasporiagenie.pdf> .

2016 ., .

			()	-, -, -, , %
	9923834	9936442	-12609	0,1
	1083708	1114041	-30332	2,8
	17087	17142	-55	0,3
	51534	54062	-2528	4,9
	24475	23539	936	3,8
	26500	33686	-7186	27,1
	99465	94291	5173	5,2
	55572	55405	166	0,3
	223619	238822	-15202	6,8
	153146	152049	1097	0,7
	135618	141464	-5846	4,3
	145946	146691	-744	0,5
	83584	89146	-5562	6,7
	67157	67738	-580	0,9

:

- 2016 . -

URL: http://www.gks.ru/wps/wcm/connect/rosstat_main/rosstat/ru/statistics/publications/catalog/doc_1140086420641 .

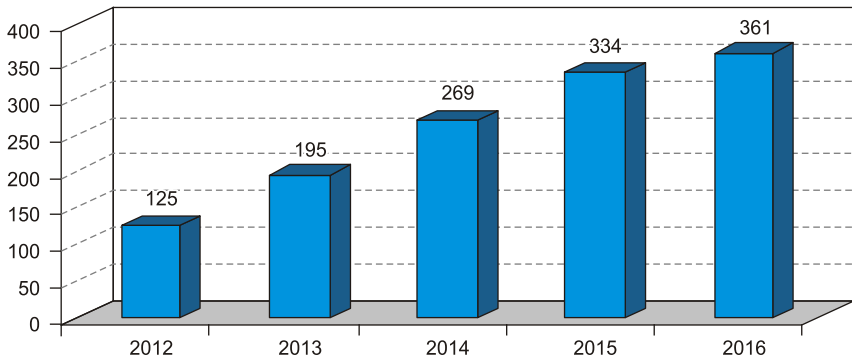
12,6 .

,

2015 . 171 .,

- 78 .

15%



. 3.

(<http://www.minfin.ru>)

2013 . 2017 .

35%, , -

82%. 3 , .

01.01.2017 ..

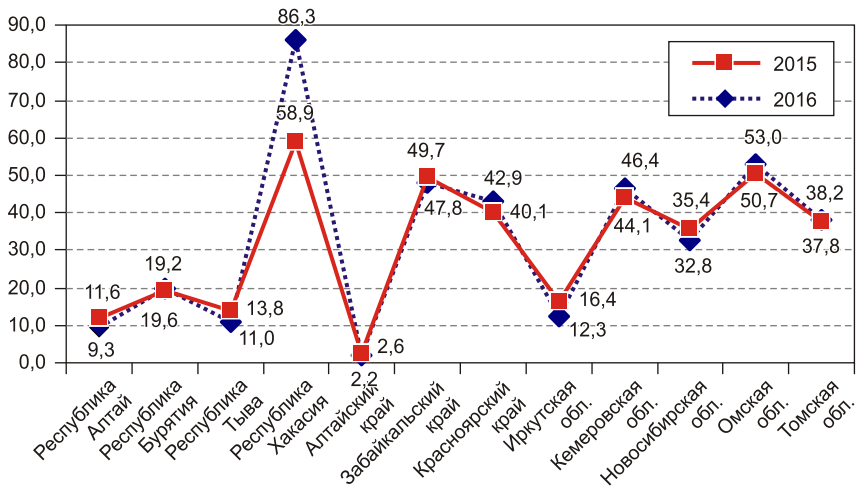
361 .. 15,3%

(2353).

100%

50%

4



. 4.

, %

2015–2016 .

»

(. 5).

«

, 01.01.2016 .

5

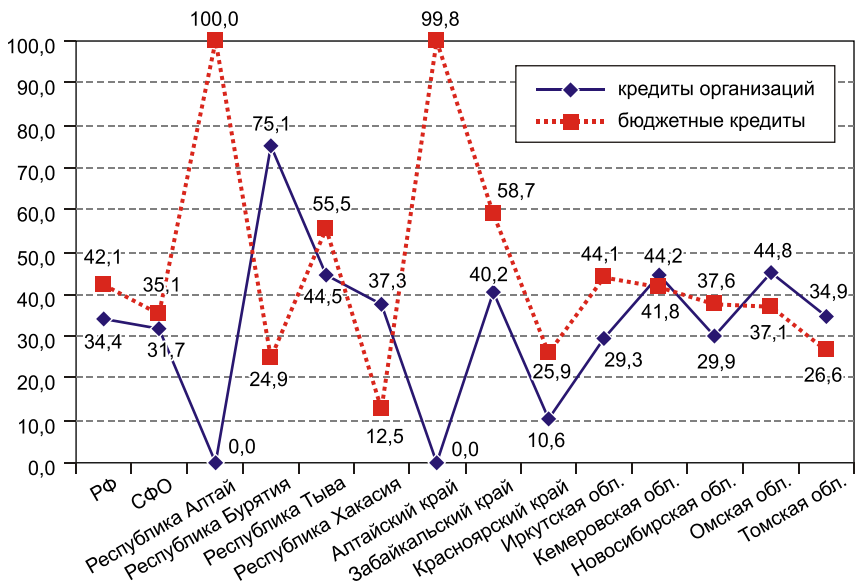
, %

	2015	2016	2015	2016	2015	2016	2015	2016	2015	2016
-	18,7	19,4	37,6	34,4	37,5	42,1	4,9	3,8	0,4	0,4
-	26,1	30,8	44,9	31,7	26,1	35,1	0,3	0,2	2,5	2,2

0,1%	,	26,1%,	-
- 37,5%.	,		-
	,	44,9%,	-
- 37,6%.	01.01.2017	.,	-
,			-
9% – 35,1%,			-
13,2% – 31,7%.			-
			-
	2016	13,	-
			-
2016 .	310	.	-
			-
			-
,			-
,			-
,			5
			-
		01.01.2017	..
			-
			-
,			-
-			-
			-

13

2016 . – URL: <http://government.ru/govworks/476/events> .



. 5.

01.01.2017 ., %

2012–2018 , () 2012 .

7 2012 . 597 « -

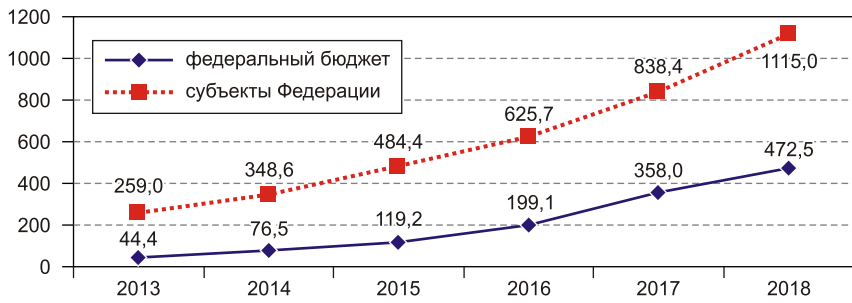
».

14 -

6 -

2018 .

14 .: // .: . – 2015. – 2 (86). – . 29–48.



. 6.

« »

2017 2018 ..

, -
 , -
 . « », -
 , [9; 10; 15]. -
 , -

· , -
 · , -
 , -
 , -
 , -
 . « , -
 , -
 , -
 , -
 . « [13, . 80]. -
 , -
 , -
 , -
 , -
 . -

«

XXI :
»

,

1. // . – 2015. – 5. – . 5–27.
2. . – URL: <http://www.kommer-sant.ru/doc/2901217> (15.03.2016).
3. / . , 2016. – 32 .
4. -
5. ; . - , 2015. – 60 .
6. VII . – URL: <https://conf.hse.ru/data/2016/04/14/1129618660/%D0%9C%D0%B0%D0%BA%D1%80%D0%BE%D1%8D%D0%BA%D0%BE%D0%BD%D0%BE%D0%BC%D0%B8%D0%BA%D0%B0.pdf> (20.07.2016).
7. , 2010. – 160 .
8. // - 2016. – 1. – . 3–7.
9. // - 2014. – 12. – C. 4–36.
10. : 20 - 2013. – 392 c.
11. // - 2016. – 4. – C. 81–94.
12. // . – 2016. – 3. – . 132–143.
13. / – : , 2011. – 357 .
14. / : - , 2016. – 200 .
15. : -2- . – : , 2011. – 320 c.
16. *Krugman P.R.* First nature, second nature, and metropolitan location // *Journal of Regional Science*. – 1993. – Vol. 33. – P. 129–144.
17. *Sala-i-Martin X.* The classical approach to convergence analysis // *The Economic Journal*. – 1996. – No. 106. – P. 1019–1036.

() –
 ,
 (630090, –
 , 17, e-mail: vera.basareva@gmail.com).
 () –
 ,
 (117418, , –
 ., 47, -mail: mikheeva_nn@mail.ru).

DOI: 10.15372/REG20170205

Region: Economics & Sociology, 2017, No. 2 (94), p. 104–125

V.G. Basareva, N.N. Mikheeva

SIBERIAN FEDERAL DISTRICT: WHAT PREVENTS ECONOMIC GROWTH

The article considers the task of restoring economic growth in the Siberian Federal District (the SFD). It is shown that for the most indicators the regions in this area have worsened their positions over the period between 2014 and 2016. The district's shares in the regional structures of produced GRP, level of employment, and estimated fixed assets decreased. An emerging issue is a decline in the technological level of the industry. Local consumer market and investment in fixed assets experience greater losses than the rest of Russia. Having analyzed the dynamics of public debt and deficits of federal subjects' consolidated budgets, we conclude that the SFD regions do not have sufficient financial resources for effective policy actions to stimulate economic growth. The article gives recommendations on how to reduce the impact of the existing negative trends in different economic areas.

Keywords: Siberian Federal District; growth factors; spatial structure; consumer market; investment; consolidated budgets

*The publication is prepared within the framework of the Program No. 13
«Spatial development of Russia in the XXI century: nature, society and their
interaction» of the Presidium of the Russian Academy of Sciences*

References

1. *Akindinova, N. & E. Yasin.* (2015). Novyy etap razvitiya ekonomiki v postsovetsoy Rossii [A new stage of economic development in post-Soviet Russia]. *Voprosy ekonomiki* [Problems of Economics], 5, 5–27.
2. *Belousov, D.* (2016). Ekonomicheskaya nedostatochnost [Economic failure]. Available at: <http://www.kommersant.ru/doc/2901217> (date of access: 15.03.2016).
3. *Belousov, D.R., T.D. Belkina, A.A. Blokhin et al.* (2016). Vosstanovlenie ekonomicheskogo rosta v Rossii [Recovery of Economic Growth in Russia]. Moscow, IEF RAS Publ., 32.
4. *Glazyev, S.Yu.* (2015). O neotlozhnykh merakh po ukrepleniyu ekonomicheskoy bezopasnosti Rossii i vyvodu rossiyskoy ekonomiki na traektoriyu operezhayushchego razvitiya [On urgent measures to strengthen the economic security of Russia and direct the Russian economy to the path of advanced development]. Moscow, Institute of Economic Strategies, Russian Biographical Institute Publ., 60.
5. *Gurvich, E.* (2016). Razvitie makroekonomicheskoy politiki v Rossii: progress i problemy [Development of macroeconomic policy in Russia: progress and problems]. Doklad na XVII Mezhdunarodnoy nauchnoy konferentsii po problemam razvitiya ekonomiki i obshchestva NIU VSHE [XVII International Academic Conference on Economic and Social Development by NRU HSE]. Available at: <https://conf.hse.ru/data/2016/04/14/1129618660/%D0%9C%D0%B0%D0%BA%D1%80%D0%BE%D1%8D%D0%BA%D0%BE%D0%BD%D0%BE%D0%BC%D0%B8%D0%BA%D0%B0.pdf> (date of access: 20.07.2016).
6. *Zubarevich, N.V.* (2010). Regiony Rossii: neravenstvo, krizis, modernizatsiya [Regions of Russia: Inequality, Crisis, Modernization]. Moscow, Independent Institute for Social Policy Publ., 160.
7. *Ivanter, V.V.* (2016). Strategiya perekhoda k ekonomicheskomu rostu [Strategy of transition to economic growth]. *Problemy prognozirovaniya* [Studies on Russian Economic Development], 1, 3–7.
8. *Kudrin, A. & E. Gurvich.* (2014). Novaya model rosta dlya rossiyskoy ekonomiki [A new growth model for the Russian economy]. *Voprosy ekonomiki* [Problems of Economics], 12, 4–36.
9. *Kuznetsova, O.V.* (2013). Regionalnaya politika Rossii: 20 let reform i novye vozmozhnosti [Regional Policy of Russia. 20 Years of Reforms and New Opportunities]. Moscow, LIBROKOM Publ., 392.
10. *Leksin, V.N. & B.N. Porfir'yev.* (2016). Otsenka rezultativnosti gosudarstvennykh programm sotsialno-ekonomicheskogo razvitiya regionov Rossii [Evaluation of the

effectiveness of government programs of socioeconomic development of regions of Russia]. *Problemy prognozirovaniya* [Studies on Russian Economic Development], 4, 81–94.

11. *Lenchuk, E.B.* (2016). Kurs na novuyu industrializatsiyu – globalnyy trend ekonomicheskogo razvitiya [Course on new industrialization: A global trend of economic development]. *Problemy prognozirovaniya* [Studies on Russian Economic Development], 3, 132–143.

12. *Grigoryev, L.M., N.V. Zubarevich & G.R. Khasaev* (Eds.). (2011). Rossiyskie regiony: ekonomicheskyy krizis i problemy modernizatsii [Russian Regions: Economic Crisis and Problems of Modernization]. Moscow, TEIS Publ., 357.

13. *Seliverstov, V.E. & V.V. Kuleshov* (Ed.). (2016). Sibirskaya shkola strategicheskogo planirovaniya [Siberian School of Strategic Planning]. Novosibirsk, Institute of Economics and Industrial Engineering SB RAS Publ., 200.

14. *Kuleshov, V.V.* (Ed.). (2014). Sovremennaya rol ekonomiki Sibiri v narodno-khozyaystvennom komplekse Rossii [Present-day Role of Siberian Economy in the Russian Macroeconomic Complex]. Novosibirsk, Institute of Economics and Industrial Engineering SB RAS Publ., 325.

15. *Shvetsov, A.N.* (2011). Sovershenstvovanie regionalnoy politiki: Kontseptsii i praktika. 2-e izd. [The Improvement of Regional Policy: Concepts and Practice. Second edition]. Moscow, LIBROKOM Publ., 320.

16. *Krugman, P.R.* (1993). First nature, second nature, and metropolitan location. *Journal of Regional Science*, 33, 129–144.

17. *Sala-i-Martin, X.* (1996). The classical approach to convergence analysis. *The Economic Journal*, 106, 1019–1036.

Information about the authors

Basareva, Vera Gavriilovna (Novosibirsk, Russia) – Doctor of Sciences (Economics), Leading Researcher at the Institute of Economics and Industrial Engineering, Siberian Branch of the Russian Academy of Sciences (17, Ac. Lavrentiev av., Novosibirsk, 630090, Russia, e-mail: vera.basareva@gmail.com).

Mikheeva, Nadezhda Nikolaevna (Moscow, Russia) – Doctor of Sciences (Economics), Professor, Chief Researcher at the Institute of Economic Forecasting, Russian Academy of Sciences (47, Nakhimov av., Moscow, 117418, Russia, -mail: mikheeva_nn@mail.ru).

27.02.2017 .

©, 2017